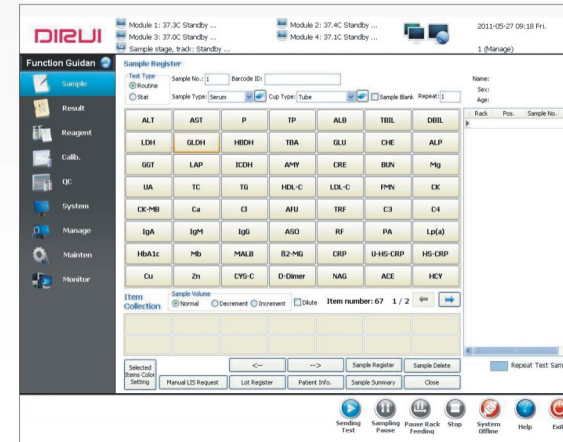


CS-6400

Auto-Chemistry System

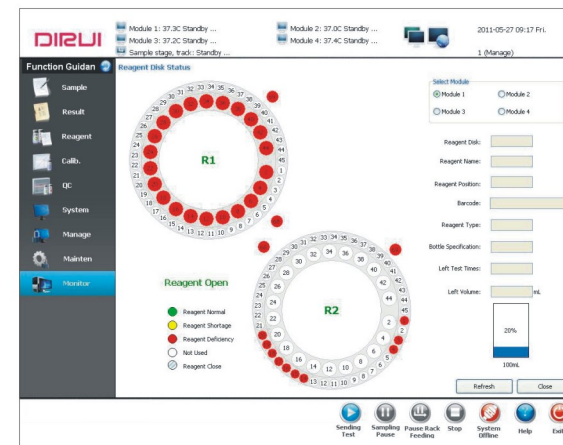
Calibration and QC

- Linear and non linear calibration
- 9 types of calibration curve fitting formulas to meet different items' analysis demands
- Each item can use 10 different levels' calibrator at most
- With calibration tracing function, depict the change trend chart of calibration K Value helps to reduce system error
- Daily QC and monthly QC ensure the instrument is working at the best analysis condition
- QC rule: default as Westgard multi rules
- QC chart: depict and print the relevant QC chart L-J, Cumulative automatically
- Out of control reason and original data saving function, which complies with the lab QC management



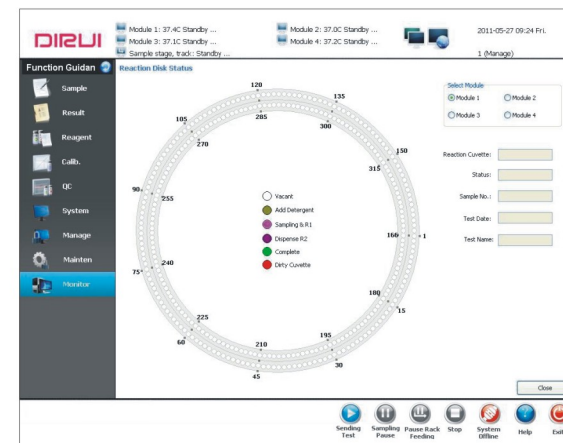
Operating Software

- English version graphical operating software, user friendly operation and interface
- Real-time online help system reduces downtime
- Easy software operation, advanced function, consistent with the use requirement of clinical test
- Multiple self-monitoring functions ensure the intelligentize of analysis process
- Data dictionary and information input which is convenient and efficient
- Multiple data query, statistic and report printing function
- Same patient information will be memorized by the software automatically and input automatically, all the things will be completed by one button
- Multiple report formats, user define modification is supported



Monitoring and Calculating Function

- Super linear limit, super reference limit, substrate depletion, antigen surplus, no reaction balance point checking function
- Serum checking function removes interference from hemolysis, lipemic, icteric
- Against cross-contamination program, avoid interference from different reagents, samples and reaction cuvettes
- Instrument analysis alarm hierarchical handling to arrange the job sequence by priorities
- User permission hierarchical management to enhance system security



Barcode Scanning(Optional)

Automatic routine sample barcode scanning ensures accurate sample information recognition
Automatic reagent barcode scanning enables accurate, fast reagent information acquisition



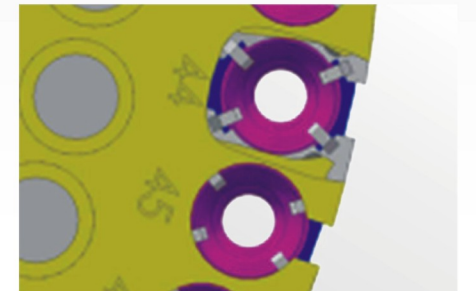
Humanized Design

Reagent Disks

Newly designed dip angle of reagent disks enhancing reagent utilization rate and saving cost

Flexible Sample Positions

Φ12~16 original tubes and sample tubes are all applicable



Advanced Analysis System

High precise instrument, high quality reagent, Control and Calibrator with complete traceability system contribute to advanced analysis system

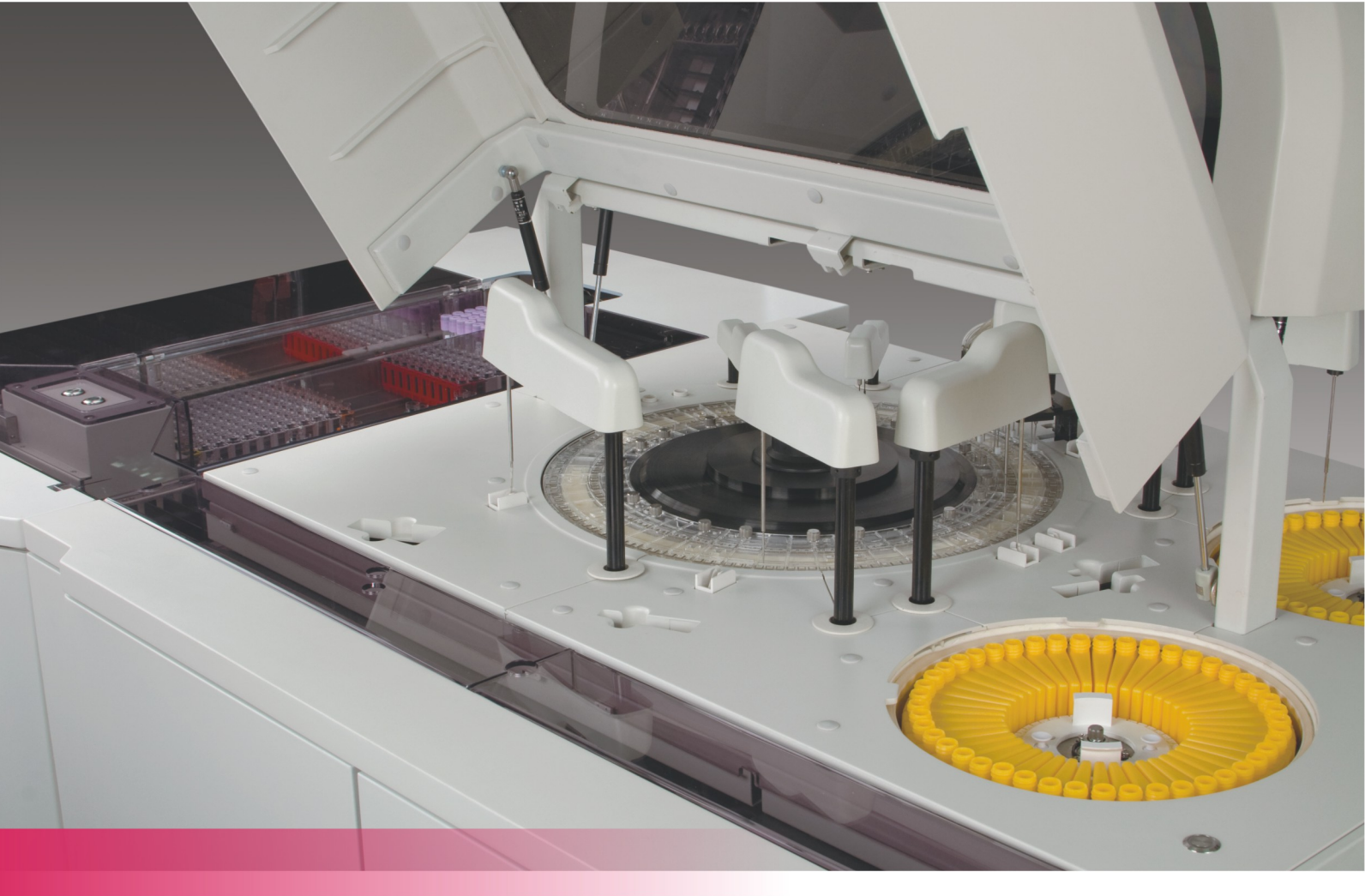
ISE Module(Optional)

- Independent ISE module, up to 2 test units each module
- Indirect simultaneous measurement of K^+ , Na^+ , Cl^-
- 480 T/H of each test unit, max. throughput up to 960T/H
- Long life electrodes, no need of maintenance for half year
- 50 ul sample for all 3 tests



CS-6400

Auto-Chemistry System



Turning a hill of productivity into a mountain of possibility

Modules Integration

Intelligent and Advanced Chemistry System

Specification	
System Type	Fully automatic, discrete, STAT priority
Throughput	Constant speed 6400T/H colorimetric(integration of 4 modules) Max. ISE throughput up to 960T/H
Light Source	Long life halogen lamp
Wavelength	340~800nm, 13 wavelengths
Analysis Method	End-point, kinetics, fixed-time, etc.
Calibration Method	1 point method, 2 point method, multiple point linear method, non-linear method
Probe	Independent sample probes, reagent probes, automatic liquid level detection, probe liquid level tracing and clot detection function
Rinsing Mechanism	Probe inner wall high pressure rinsing
Mixing Mechanism	2 sets independent mixers for each module ensure sufficient reaction
Reaction Cuvette	330 new type reaction cuvettes for each module
Temperature Control	The temperature of reaction disk incubation bath is 37℃±0.1℃
Reagent Position	134 reagent positions for each module, with continuous refrigeration
Sample Volume	1.5 ul~30ul, 0.1ul increment
Reagent Volume	15 ul~300ul, 1ul increment
Reaction Volume	Minimum reaction volume 150 ul

DIRUI INDUSTRIAL CO.,LTD.

95 Yunhe Street, New & High Tech. Development Zone
Changchun, Jilin 130012, P. R. China
Tel: +86 431 85100409 Fax: +86 431 85172581
E-mail: dirui@dirui.com.cn Http://www.dirui.com.cn

• Specifications subject to change without notice.
20110608

DIRUI

CS-6400

Auto-Chemistry System



Modules Integration

Intelligent and Advanced Chemistry System

DIRUI

CS-6400

Auto-Chemistry System

DIRUI

Modules Integration

Achieve continuous working of Auto-Chemistry Analyzer

Modules Integration ---- Universal High-end Design
Flexible Modules Integration PLUS Independent Module Control

Safety High-efficiency Flexibility Independency

Representing the highest Chemistry Analyzer technology of China.



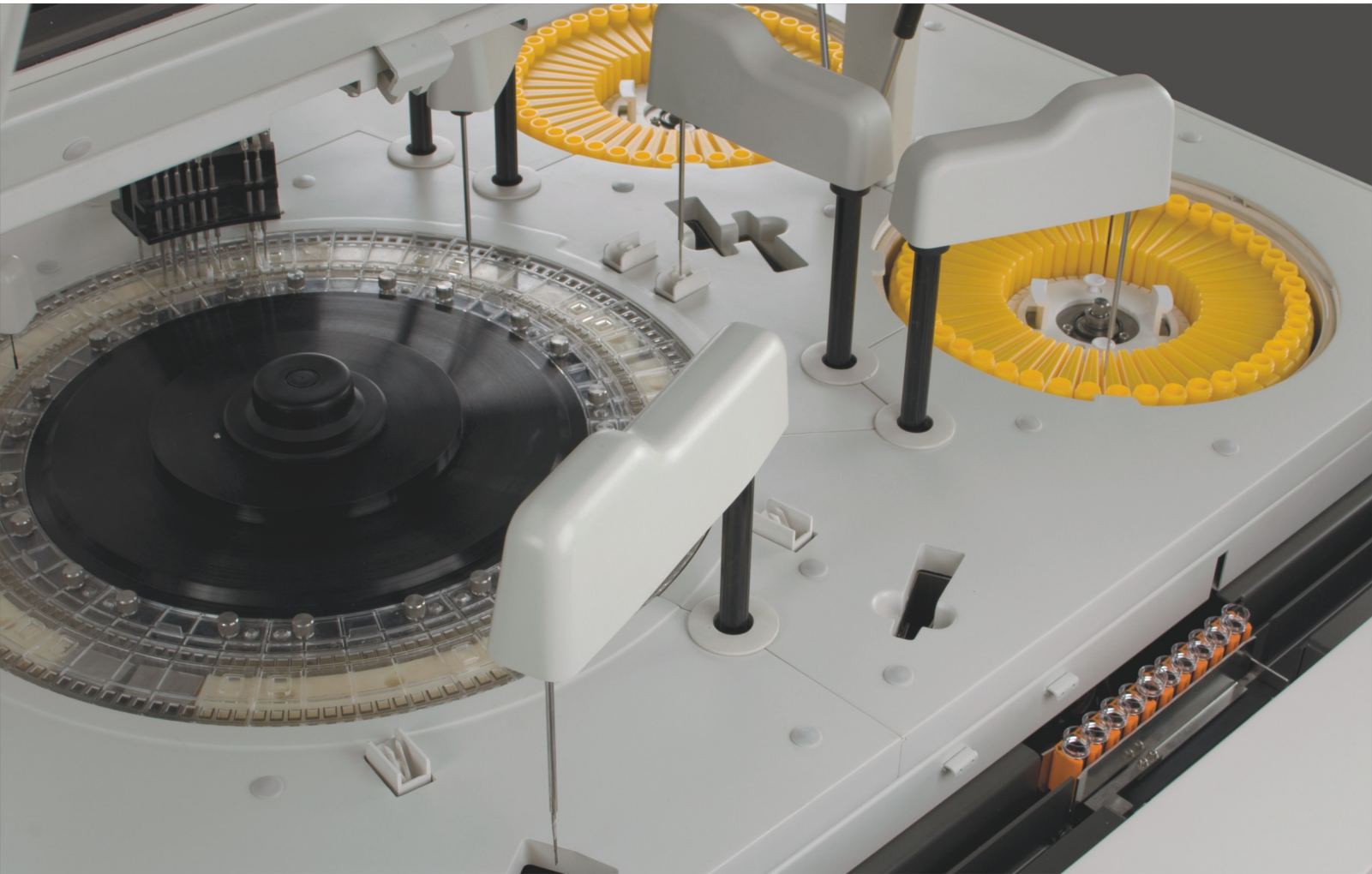
The throughput of single module can achieve 1600 test s/h.



Four modules integration with maximum throughput of 6400 tests/h, perfectly meeting the demands of high-workload hospitals, helps to increase the work efficiency to a larger extent.

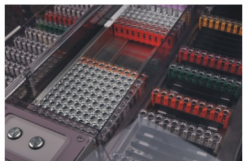
CS-6400

Auto-Chemistry System



Large Capacity Sample Stage and Track

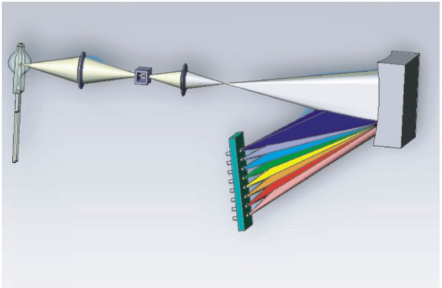
- Auto-track loading contributes to great efficiency and productivity. Large capacity sample stage can hold as much as 30 sample racks (300 samples). STAT function providing quick access for emergent samples.



Advanced Photometry System

Holographic concave flat field grating, rear spectrophotometry

- Cluster-condensing light(point light source) technology to realize microvolume analysis coupled with less reagent consumption
- Air cooling is adopted for extending the life span of Long Life Light Source
- Perfect position design ensures no signal attenuation and interference
- Anti-ambient light interference contributes to accurate result delivery



Stable Temperature Control System

A.Cooling System

- Advanced postposition semi-conductor ensures direct heat releasing. Disks water cooling to the benefit of no temperature difference and easy maintenance

B. Constant Temperature Device of Reaction Cuvette

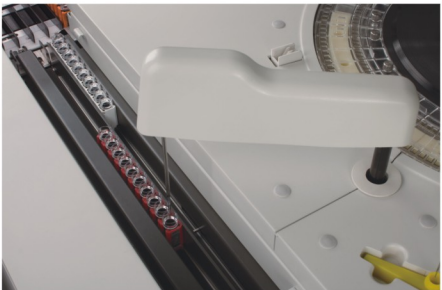
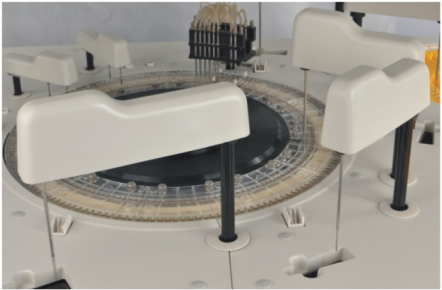
- Recycling water of constant temperature, automatically changing water and adding defoamer. Reaction cuvettes are emerged into warm water which enables cuvettes' even heating. The ambient temperature influence is effectively avoided and without the need of reagent pre-heating
- PID thermostat technology ensures $37^{\circ}\text{C} \pm 0.1^{\circ}\text{C}$



Accurate Sampling System

Probe:

- Polished probes with nano processing technology, reducing the cross-contamination effectively
- Automatic liquid level detection: the probes automatically detect the liquid level and stop descending ensuring the probes enter into liquid at perfect depth and reducing liquid suspension
- Collision detection function, self-resetting, automatic sample and reagent pipetting
- Intelligentized clog and clot detection: detecting the status of probe clog and the existence of clot
- High pressure rinsing function, enhancing pipetting volume accuracy. High pressure rinsing for inner wall of 5 probes, stream rinsing for outer wall
- It alarms when there is inadequate reagent volume and slew to same reagent to ensure continuous analysis. Automatic remaining volume detection and available times display.



Syringe:

- Long life high-precision ceramic piston ensures high precision of sampling, low maintenance cost
- Water degassing technology: The analyzer has special degassing device to remove the air dissolved in the tube system, which ensures quick, accurate and microvolume pipetting.

High-Efficient Rinsing System

A.Automatic Cuvette Rinsing

- 8 stops 10 steps rinsing by warm water ensures complete cleanness

B.Probe Inner Wall Rinsing

- Vacuum draining liquid and warm water high pressure rinsing
- Carryover contamination rate $\leq 0.1\%$, ensuring best cleaning state

